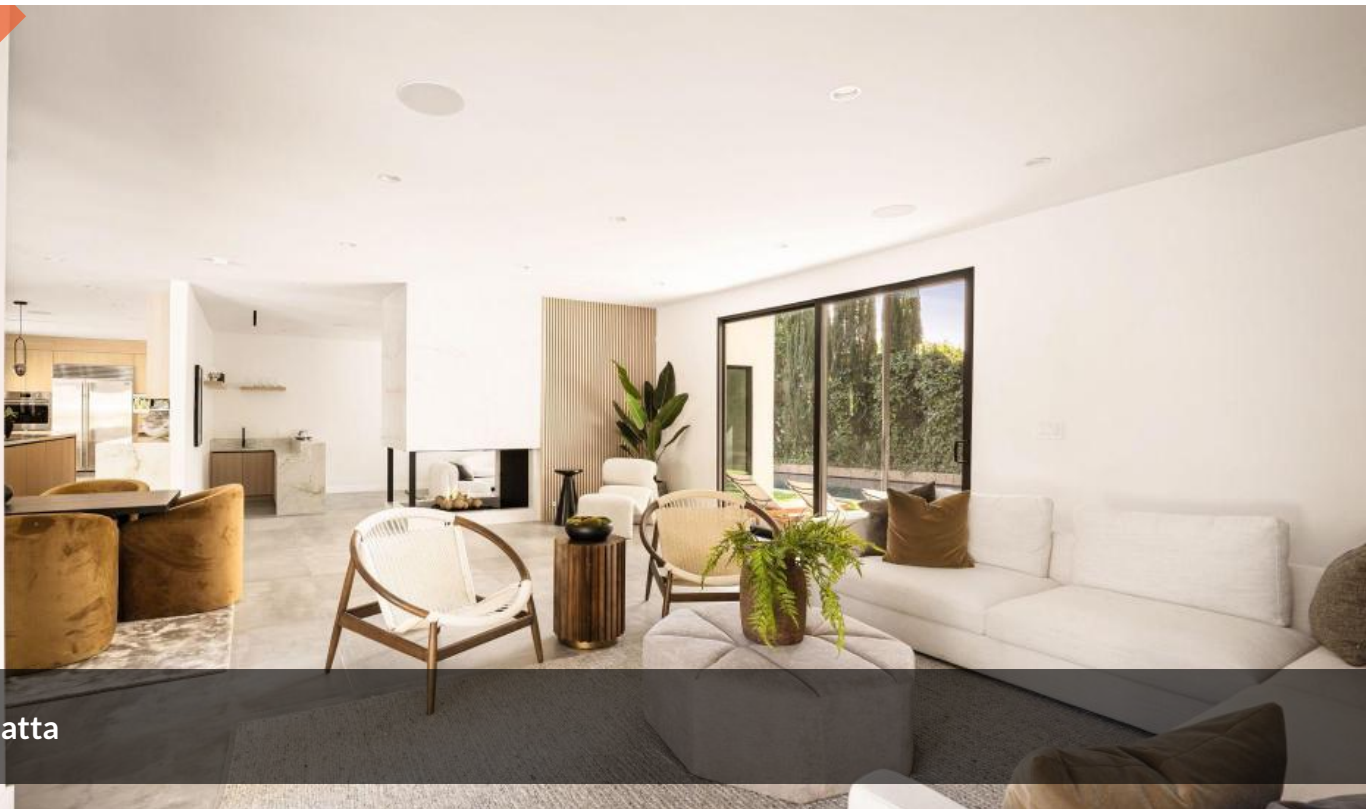
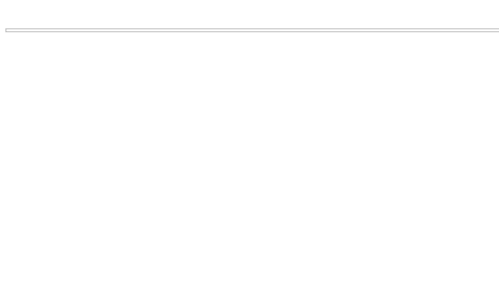


Just Listed



Parramatta



Luxury Apartment !! Walk To All Amenities.

🛏 3 📶 2 🚗 2

Introducing a Prestigious Opportunity in the Heart of Parramatta CBD

Property1Group proudly presents an exceptional opportunity to secure a premium residence in the heart of one of Australia’s fastest-growing CBDs. Situated in the vibrant and evolving suburb of Parramatta, this exclusive development offers a lifestyle defined by convenience, connectivity, and contemporary elegance.

Parramatta continues to transform into a world-class destination, driven by significant multi-billion-dollar infrastructure investment, enhanced transport links, expanding employment opportunities, world-class education facilities, and an exciting retail and entertainment precinct.

This architecturally designed development showcases a new benchmark in modern living, offering sophisticated apartments with premium finishes, functional layouts, and an emphasis on style and comfort. Perfectly positioned within walking distance to Parramatta Station and Westfield Parramatta, this residence is ideal for first home buyers, investors, and those seeking a premium urban lifestyle.

Luxury Apartment! Call

Price 0422973729 For Inspection!

Property Type Residential

Property ID 118602

Agent Details

Deepinder Kaur - 0422973729
Arun Ahuja - 0421 437 682

Office Details

Property1group
OFF 211 20A Lexington Dr Bella Vista, NSW, 2153 Australia
1300 959 558



Residents will enjoy a range of exclusive communal amenities, including beautifully landscaped gardens, BBQ entertaining areas, and an impressive grand lobby entrance designed to create a welcoming sense of arrival.

Experience the perfect balance of city convenience and tranquil surroundings — from the vibrant energy of Parramatta's town centre to peaceful rooftop spaces offering greenery and open views.

A Truly Unbeatable Location

- Approx. 6-minute walk to Parramatta Station
- Approx. 5-minute walk to Parramatta Park
- Approx. 6-minute walk to Westfield Parramatta Shopping Centre
- Approx. 6-minute walk to Parramatta River
- Approx. 8-minute walk to Parramatta Square
- Approx. 8-minute drive to Western Sydney University
- Surrounded by quality schools, colleges, and education facilities
- Approx. 2km to Westmead Health Precinct
- Convenient access to the upcoming Parramatta Light Rail connecting Westmead and Carlingford
- Close to an extensive selection of cafés, restaurants, retail, and lifestyle amenities
- Excellent public transport connections providing easy access to Sydney CBD and surrounding suburbs

This is a rare opportunity to become part of Parramatta's exciting future and secure a residence in one of Sydney's most sought-after growth precincts.

For more information or to arrange your private inspection, contact:

Deepin Seth

✉ Deepin@property1group.com.au

☎ 0422973729

Disclaimer:

The information provided has been prepared from sources believed to be reliable. However, we do not guarantee its accuracy and accept no responsibility for any errors or omissions. Interested parties should conduct their own enquiries and rely on their own investigations. Images are for illustrative and marketing purposes only and may not represent the final product, finishes, or inclusions.

The above information provided has been furnished to us by the vendor/s. We have not verified whether or not that information is accurate and do not have any belief in one way or the other in its accuracy. We do not accept any responsibility to any person for its accuracy and do no more than pass it on. All interested parties should make and rely upon their own inquiries in order to determine whether or not this information is in fact accurate.