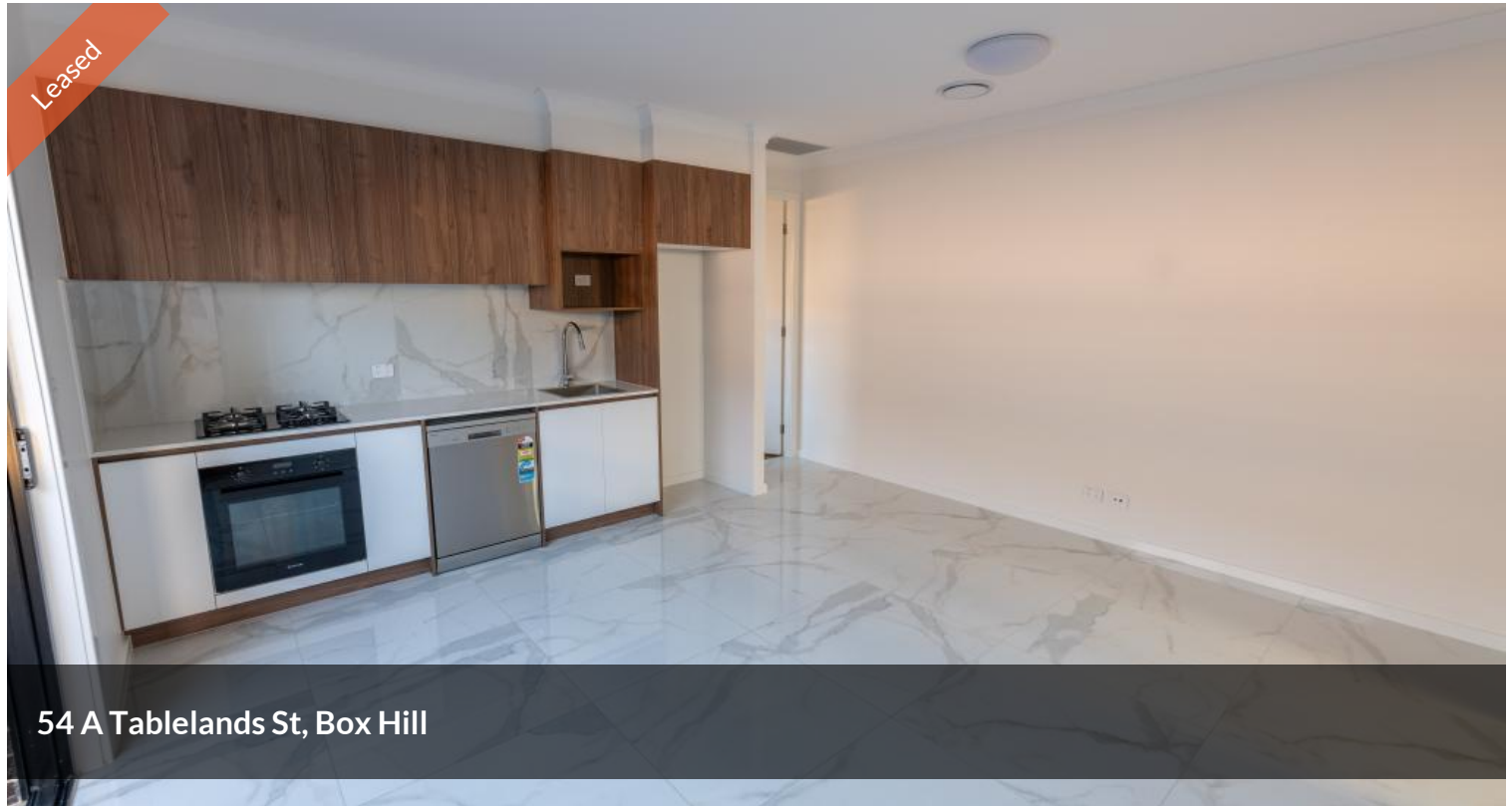


Leased



54 A Tablelands St, Box Hill



Beautiful big 2 bedroom granny with backyard.

Property1Group proudly presents this perfectly positioned 2 bedroom granny ready to move in on the high side of a quiet street. Close to Rouse Hill Side.

Features:

- Short distance to local parks, proposed Sporting Fields, Town Centre & new schools
- 2 Bedrooms with mirrored built ins
- Open plan lounge & dining
- Gas cooking kitchen with Caesar stone benchtop and soft close hinges
- Modern bathroom
- Flooring throughout
- Ducted a/c
- Separate entrance
- No Pets

Location:

2 1

Price \$550 per week

Property Type Rental

Property ID 12392

Agent Details

Rakhi Kaur - 0401 628 010

Office Details

Property1group
OFF 211 20A Lexington Dr Bella
Vista, NSW, 2153 Australia
1300 959 558

PROPERTY  GROUP

- Approx. 5-6 mins to Rouse hill Town Centre and Metro Station.
- Approx. 7-8 mins to Tallawong Station.
- Approx. 3-4 mins to upcoming Box hill City Centre.
- Approx. 7 mins to Santa Sophia Catholic College and Rouse hill Public school
- Approx. 5 mins to upcoming new \$300 million Rouse Hill Hospital which is on Windsor Rd near the junction with Commercial Rd, Rouse Hill.
- Approx. 15 mins to Norwest Business Park

Contact **Rakhi Kaur** on 0401628010 for Inspection.

Disclaimer: The above information has been gathered from sources that we believe are reliable. However, we cannot guarantee the accuracy of this information and nor do we accept responsibility for its accuracy. Any interested parties should rely on their own enquiries and judgment to determine the accuracy of this information for their own purposes. Images are for illustrative and design purposes only and do not represent the final product or finishes.

The above information provided has been furnished to us by the vendor/s. We have not verified whether or not that information is accurate and do not have any belief in one way or the other in its accuracy. We do not accept any responsibility to any person for its accuracy and do no more than pass it on. All interested parties should make and rely upon their own inquiries in order to determine whether or not this information is in fact accurate.