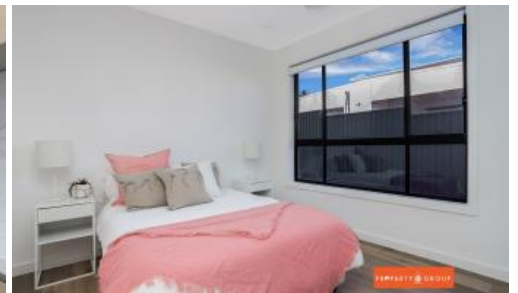




Claremont Meadows

PROPERTY GROUP



Brand NEW 4 Bed House with Double Garage | 5 Mins Drive to Caddens Corner Shopping Centre

Discover an Incredible Opportunity!

This exceptional estate offers the perfect blend of comfort and convenience, ideally located near a host of existing and upcoming amenities. Whether you're a first-time buyer or a family looking for a secure and welcoming home, this property is your chance to join a thriving community.

The highly anticipated Orchard Hills Station will soon be positioned on the east side of Kent Road, just north of Lansdowne Road, providing convenient access and plans for future expansion.

Premium Features from the Builder:

- Open-plan living with a modern kitchen and dining area seamlessly connecting to an outdoor alfresco space
- Spacious bedrooms, all with built-in wardrobes
- High-quality Fisher & Paykel appliances, including a gas cooktop, rangehood, oven, and dishwasher
- Stylish pull-handle and lock kit for the front door
- Internal access to the double automated garage
- Professionally designed landscaping and fencing
- Ducted air conditioning for year-round comfort

 4  2

Price

Contact Agent

Property Type

Residential

Property ID

25448

Floor Area

550 m2

Agent Details

Aditya Gulati - 0413542086

Arun Ahuja - 0421 437 682

Office Details

Property1group

OFF 404 20B Lexington Dr Bella

Vista, NSW, 2153 Australia

1300 959 558

PROPERTY  GROUP

- Plus, a range of additional premium inclusions

? Location Highlights:

- Proposed Orchard Hill Metro Station
- Planned Gipps Street Recreation Precinct
- Close proximity to the M4 Motorway and Great Western Highway
- Caddens Corner Shopping Centre nearby
- Easy access to Nepean Hospital
- Western Sydney TAFE and University within reach
- Surrounded by quality public and private schools
- Convenient access to Kingswood and St Marys Train Stations

Step into your dream home and secure your place in a community designed for growth and opportunity!

Agent name: Aditya Gulati

Contact: 0413542086

Email: aditya@property1group.com.au

* Disclaimer: Images used are for display purposes only, finishes and products subject to final approval.

Interested parties should not rely on these particulars as representations of fact but must instead satisfy themselves by inspection or otherwise.

The above information provided has been furnished to us by the vendor/s. We have not verified whether or not that information is accurate and do not have any belief in one way or the other in its accuracy. We do not accept any responsibility to any person for its accuracy and do no more than pass it on. All interested parties should make and rely upon their own inquiries in order to determine whether or not this information is in fact accurate.