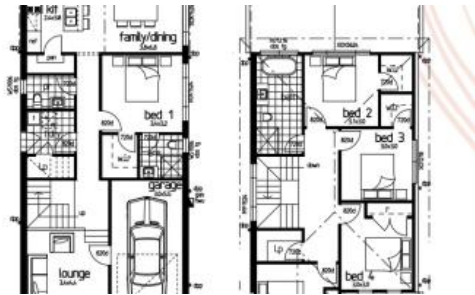




Rouse Hill



## Double Storey Custom Build | call Ilyas 0455 448 640

### A New Benchmark in Modern Living

Welcome to **Gundari**—the pinnacle of contemporary suburban life in North West Sydney.

Set within a master-planned community surrounded by picturesque parklands, Gundari offers a seamless blend of lifestyle and convenience. With close proximity to leading schools, vibrant retail hubs, efficient public transport, and recreational facilities, this exceptional development redefines modern living.

Positioned in the heart of the thriving Rouse Hill precinct, Gundari is an exclusive two-stage residential release featuring architecturally designed turnkey house and land packages. Each home is meticulously crafted by one of Australia's leading construction and design teams, delivering a new standard of quality, comfort, and community.

Embark on the Gundari journey—where thoughtful design meets future-focused living.

### Refined Living, Thoughtfully Designed

Every Gundari residence is a showcase of sophisticated design and everyday functionality. Crafted with premium materials and tailored to suit modern family lifestyles, these homes sit in a beautifully natural setting while offering

5 2 1 276.80 m2

<b>Price</b>	Contact Agent!
<b>Property Type</b>	Residential
<b>Property ID</b>	40513
<b>Land Area</b>	276.80 m2
<b>Floor Area</b>	211.30 m2

### Agent Details

Ilyas Qureshi - 0455448640  
Arun Ahuja - 0421 437 682

### Office Details

Property1group  
OFF 211 20A Lexington Dr Bella Vista, NSW, 2153 Australia  
1300 959 558

**PROPERTY** **GROUP**

immediate access to the energy of Rouse Hill. From spacious open-plan layouts to luxurious finishes, Gundari delivers comfort without compromise.

### **Seamlessly Connected to the North West**

Gundari enjoys a privileged position within a dynamic and growing corridor of Sydney. With **Tallawong Metro Station** just moments away, residents benefit from rapid, direct access to the Sydney CBD and major destinations across the North West.

But Gundari's true distinction lies in its balance—where urban accessibility meets the serenity of nature. Surrounding green spaces, parklands, and walking trails invite you to unwind and explore, while nearby educational institutions offer pathways from early childhood to secondary schooling.

### **Everything Within Reach**

Whether you're grabbing your morning coffee, ticking off the weekly shop, or enjoying a relaxed meal out, Gundari places you at the centre of it all. Rouse Hill Town Centre and Rouse Hill Village Centre are just a short drive away, offering a curated mix of retail, cafés, dining, and entertainment—all within easy reach.

**Gundari** is more than a place to live—it's a connected, inspired community crafted for those who value quality, convenience, and a sense of belonging.

Agent Name: Ilyas Qureashi

Email: [Ilyas@property1group.com.au](mailto:Ilyas@property1group.com.au) Contact: +61 455 448 640

The above information provided has been furnished to us by the vendor/s. We have not verified whether or not that information is accurate and do not have any belief in one way or the other in its accuracy. We do not accept any responsibility to any person for its accuracy and do no more than pass it on. All interested parties should make and rely upon their own inquiries in order to determine whether or not this information is in fact accurate.