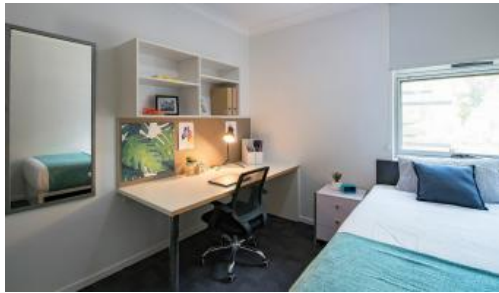




Schofields



## First time buyers Special - Apartments @Schofields - Enquire Now !!!

**\*\* DONT MISS THE OPPORTUNITY - Enquire Now!!**

**A Sydney first-home buyer hotspot has emerged in the northwest suburb of Schofields**

Prices from \$475K are luring younger buyers out west for its affordability along with new housing developments.

\*\*\*\*\*

5 Minutes' walk to Schofields Railway station

10 Mins walk to Woolworths & Coles

10 Mins walk to Aus Post

Very Close to Groceries, Chemist, Childcare, Pamper session, Lunch, or Dinner

5 Mins Drive to "Schofields Village " Shopping centre

15 Mins drive to Tallawong, Rouse hills, Riverstone,

Schools with good ratings

🛏 2 🚿 2 🚗 1

**Price** First time buyers Special - Apartments @Schofields

**Property Type** Residential

**Property ID** 8518

**Floor Area** 108 m2

### Agent Details

Arun Ahuja - 0421 437 682

### Office Details

Property1group  
OFF 211 20A Lexington Dr Bella Vista, NSW, 2153 Australia  
1300 959 558

**PROPERTY GROUP**

Very well connectivity to Parramatta & Sydney CBD

\*\*\*\*\*

For Private Inspections:

**Agent: Gowri**

**Mobile: 0481148513**

**Email: [gowri@property1group.com.au](mailto:gowri@property1group.com.au)**

\*\*\*\*\*

**\*\* Disclaimer \*\*** The above information has been gathered from sources that we believe are reliable. However, we cannot guarantee the accuracy of this information and nor do we accept responsibility for its accuracy. Any interested parties should rely on their own enquiries and judgment to determine the accuracy of this information for their own purposes. Images are for illustrative and design purposes only and do not represent the final product or finishes.

The above information provided has been furnished to us by the vendor/s. We have not verified whether or not that information is accurate and do not have any belief in one way or the other in its accuracy. We do not accept any responsibility to any person for its accuracy and do no more than pass it on. All interested parties should make and rely upon their own inquiries in order to determine whether or not this information is in fact accurate.